



Cherry Creek School District Kindergarten Round Up

To register your child for Kindergarten for the 2018-19 school year.

(Students currently attending a CCSD preschool do NOT need to re-register for Kindergarten.)

Non-Resident applications will be available online April 1, 2018



Dedicated to Excellence
Cherry Creek Schools

Early registration allows principals and school staff to establish contact with parents and do adequate planning for the coming school year.

District Admissions Offices are Open 7:30am - 4:00pm, Monday- Friday

WEST: 9150 E. Union Ave., Greenwood Village (Yosemite St. & Union Ave.)

EAST: 5416 S. Riviera Way Centennial (Picadilly St & Riviera Way)

Students do not need to be present when registering in District Admissions.

Registration Requirements

1. Birth Certificate:

Must be 5 years old on or before October 1, 2018

2. Immunization Records

3. Proof of residency:

Current Xcel Energy bill
(visit our website for additional options)

4. Photo ID of parent / guardian

5. Registration Forms:

Available in Admissions or download from our website

February 1-7

Aspen Crossing, Black Forest Hills, Buffalo Trail, Cottonwood, Creekside, Dakota Valley, Eastridge, Mountain Vista, Red Hawk Ridge, Village East

February 8-14

Altitude, Antelope Ridge, Arrowhead, Canyon Creek, Highline, Homestead, Peakview, Ponderosa, Sagebrush, Willow Creek

February 15-21

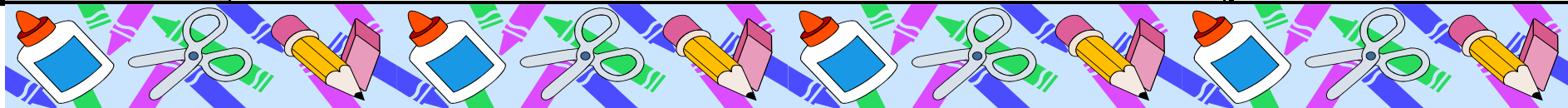
Cimarron, Fox Hollow, Greenwood, High Plains, Holly Ridge, Indian Ridge, Mission Viejo, Summit, Timberline, Trails West, Walnut Hills

February 23-28

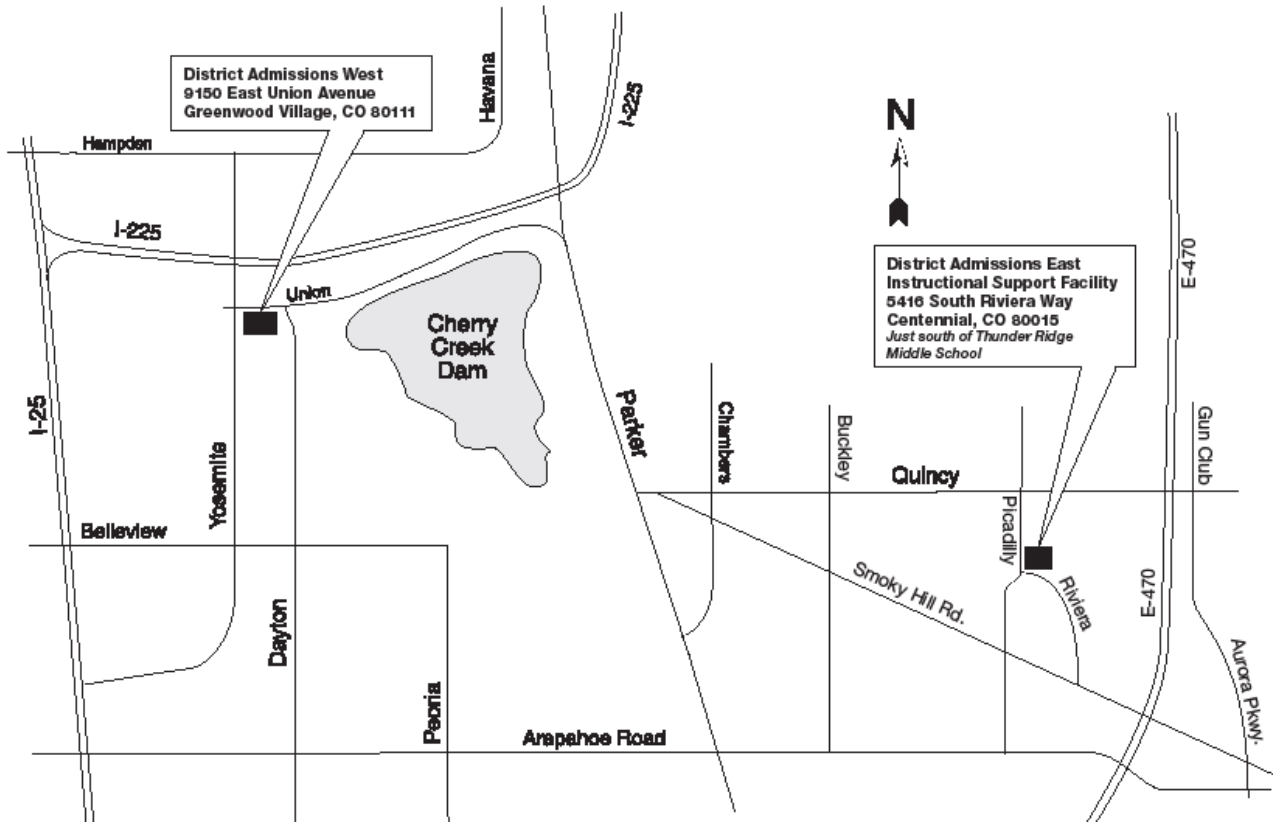
Belleview, Cherry Hills Village, Coyote Hills, Dry Creek, Heritage, Independence, Meadow Point, Pine Ridge, Polton, Rolling Hills, Sunrise

Questions?

To help shorten the wait time to register, please attend on the week listed above. If you are unable to attend during your assigned week, you may come any time during the month. Call: 720-554-4550 or 720-886-7480 or: www.cherrycreekschools.org > Student Registration



Altitude	720-886-4303	Dry Creek	720-554-3300	Peakview	720-886-3100
Antelope Ridge	720-886-3300	Eastridge	720-747-2200	Polton	720-747-2600
Arrowhead	720-886-2800	Fox Hollow	720-886-8700	Pine Ridge	720-886-8800
Aspen Crossing	720-886-3700	Greenwood	720-554-3400	Ponderosa	720-747-2800
Bellevue	720-554-3100	Heritage	720-554-3500	Red Hawk Ridge	720-886-3800
Black Forest Hills	720 886-8900	Highline	720-747-2300	Rolling Hills	720-886-3400
Buffalo Trail	720-886-4000	High Plains	720-554-3600	Sagebrush	720-886-8300
Canyon Creek	720-886-3600	Holly Ridge/Hills	720-747-2400	Summit	720-886-6400
Cherry Hills Village	720-747-2700	Homestead	720-554-3700	Sunrise	720-886-2900
Cimarron	720-886-8100	Independence	720-886-8200	Timberline	720-886-3200
Cottonwood Creek	720-554-3200	Indian Ridge	720-886-8400	Trails West	720-886-8500
Coyote Hills	720-886-3900	Meadow Point	720-886-8600	Village East	720-747-2000
Creekside	720-886-3500	Mission Viejo	720-886-8000	Walnut Hills	720-554-3800
Dakota Valley	720-886-3000	Mountain Vista	720-886-2700	Willow Creek	720-554-3900



For more information, please visit our website at www.cherrycreekschools.org.